










THE COSTS OF DRAVET SYNDROME (DS)

Dravet syndrome (DS) is a rare, pediatric epilepsy, affecting an estimated **1 in 15,700 live births in the U.S.**¹ **Children with DS experience an average of 40 seizures a month.**²

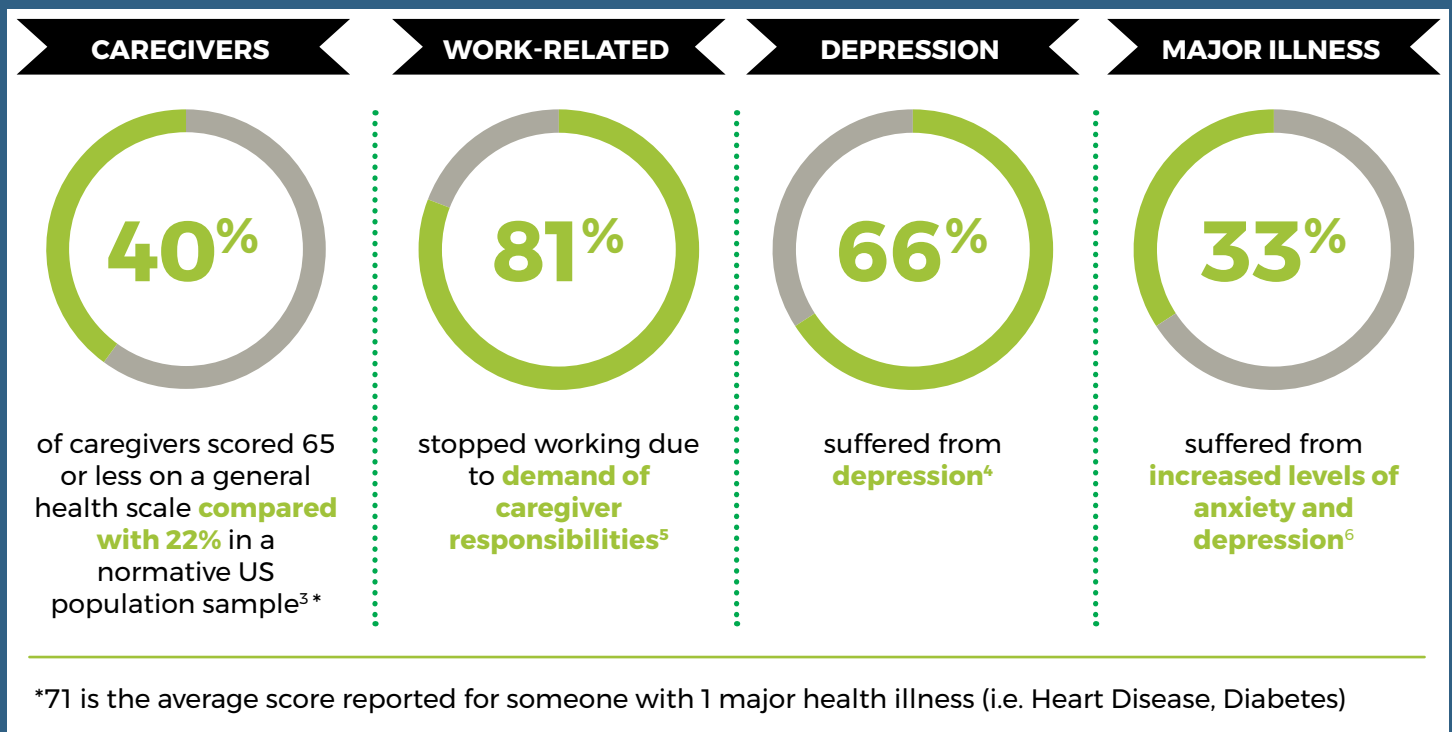
The total direct and indirect costs associated with such frequent seizures can be significant, as DS has both an emotional and an economic effect on caregivers and families.

DIRECT COSTS (USD) (i.e., patient care)		INDIRECT COSTS (USD) (i.e., day-to-day impact)	
 In home visits	\$9,894	Cost associated with loss of workplace productivity: ³	
 Doctor visits	\$2,728	 ~997 hours lost or the equivalent of 125 8-hour workdays/year	\$19,925
 Emergency room visits	\$1,497	 Income	\$9,242
 Hospitalization	\$11,565	Cost associated with loss of leisure time: ³	
 Ground and air ambulance	\$1,188	 ~2,047 hours lost or the equivalent of 256 8-hour workdays/year	\$52,415
 Annual complementary healthcare costs ³ (chiropractic services, multivitamins, essential oils)	\$325		
TOTAL = > \$107,000 per year per patient			

THE COSTS OF DRAVET SYNDROME (DS)



The emotional burden of caring for a child with DS can be a contributing factor for indirect costs, such as lost productivity. Beyond the factors accounted for in the above study, the emotional burden of DS is proven to have a significant impact for caregivers.



To quantify the direct and indirect costs of DS, Zogenix partnered with the University of Colorado to collect responses from 34 DS caregivers. Study participants were being treated by experts at Children’s Hospital Colorado – therefore, cost estimates may underestimate those of families with DS that do not have access to Center of Excellence care.

References

1. Wu Y.W., Sullivan J., McDaniel S.S., Meisler M.H., Walsh E.M., Li S.X., et al. Incidence of Dravet syndrome in a US population. *Pediatrics* 2015;136:e1310-315. 2. Zogenix data on file 3. Whittington, M. D., Knupp, K. G., Vanderveen, G., Chong, K., Gammaitoni, A., Campbell, J. D. The direct and indirect costs of Dravet Syndrome. *Epilepsy & Behavior*. 2019;80, 109-113. 4. Villas N., Meskis M.A., Goodliffe S. Dravet syndrome: Characteristics, comorbidities, and caregiver concerns. *Epilepsy Behav.* 2017 Sep;74:81-86. doi: 10.1016/j.yebeh.2017.06.031. Epub 2017 Jul 18. 5. Lagae L., Brambilla I., Mingorance A., Gibson E., Battersby A. “DISCUSS Dravet –Key socioeconomic findings from a large multinational survey of Dravet syndrome caregivers.” Presented at the 12th European Paediatric Neurology Society Congress. June 20-24 2017; Lyon, France. 6. Campbell, Johnathan D., Whittington Melanie D., Chong, Kim, VanderVeen, Gina R., Kunpp, Kelly, Gammaitoni, Arnold. “Assessing the Impact of Caring for a Child with Dravet Syndrome: Results of a Caregiver Survey.” Presented at the 71st American Epilepsy Society (AES) Annual Meeting, December 1-5, 2017; Washington, D.C.